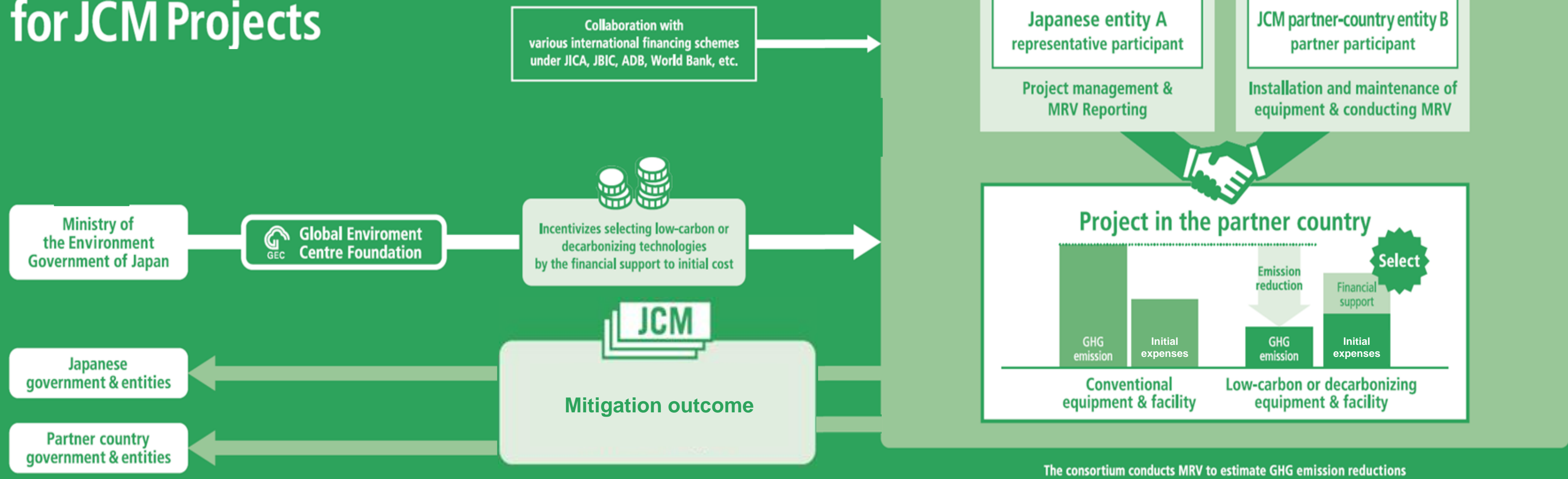


# Financing Programme for JCM Projects and JCM Global Match

**27 February 2025**

**Global Environment Centre (GEC)**

## Financing Programme for JCM Projects



Since 2013, 238 JCM projects have been selected

## Energy Efficiency



Boiler & Chiller & Solar Power (Thailand)



Thermal Oil Heater System (Indonesia)



Chiller & LED Lighting (Vietnam)

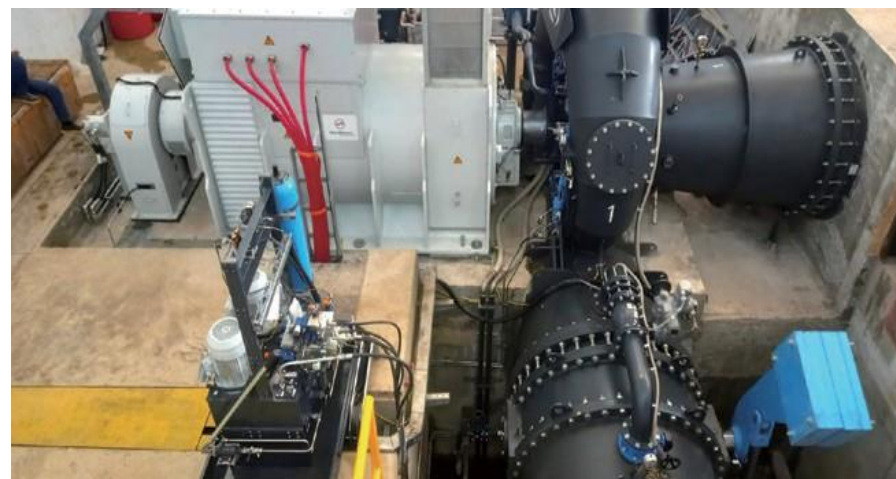


Once-through Boiler (Indonesia)

## Renewable Energy



Rice Husk Power Generation (Chile)



Mini Hydro Power Plant (Indonesia)



Binary Geothermal Power Plant (Philippines)



Solar Power (Thailand)

## Effective Use of Energy



Waste Heat Recovery (Myanmar)



Gas Co-generation & Chiller (Thailand)

## Waste Handling and Disposal



Power Generation/Methane Recovery (Mexico)

## Transportation



CNG-Diesel Hybrid Public Bus (Indonesia)

Case Examples of JCM Model Project

2

● Waste Handling and Disposal



## Waste to Energy Project in Bac Ninh Province

Country	Vietnam
Representative	JFE Engineering Corporation
Partners	T&J Green Energy Company Limited

A waste-to-energy plant is introduced in Bac Ninh province. This plant incinerates and generates electricity from 230tons/day of municipal solid waste, which has been disposed of as landfill. The plant also incinerates and generates electricity from 120 tons/day of municipal solid waste and 150tons/day of industrial solid waste, which were previously incinerated.

This scheme enables the proper waste treatment and the supply of electricity without the use of fossil fuels. It also reduces methane emissions from landfill sites and greenhouse gas (GHG) emissions by replacing grid electricity.



Waste to Energy Incinerator (Grate)

Manufactured by Standard-Kessel Baumgarte (Germany)

Processing Volume:  
500t/day  
(Municipal solid waste 350t/day and industrial solid waste 150t/day)

Case Examples of JCM Model Project

5

● Renewable Energy



## Introduction of 14.5MW Mini Hydro Power Plant Project in Siguil River in Mindanao

Country	Philippines
Representative	Toyota Tsusho Corporation.
Partner	Alsons Consolidated Resources, Inc., Alsons Renewable Energy Corporation Siguil Hydro Power Corporation

This project aims to reduce CO2 emissions by constructing a run-of-river mini hydroelectric power plant 14.5MW (14.5 X 1unit) utilizing water resources in the Municipality of Maasim, in the southern part of Mindanao Island. This project contributes to the reduction of greenhouse gas (GHG) emissions by replacing grid electricity with renewable energy and also contribute to the realization of a sustainable society by addressing the growing demand for electricity necessitated by economy growth.



Case Examples of JCM Model Project

7

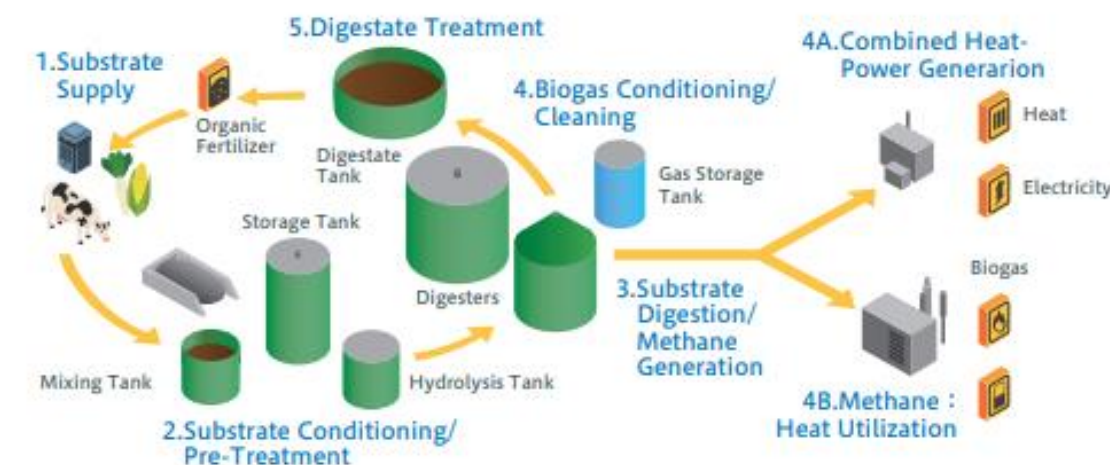
● Renewable Energy



## Biogas Power Generation and Fuel Conversion Project in Pineapple Canneries

Country	Philippines
Representative	Itochu Corporation
Partners	Met Power Venture Partners Holdings Inc., Surallah Biogas Ventures Corporation

In this project, biogas derived from pineapple residue is utilized as fuel for gas engines and boilers to generate power and steam at the two pineapple canning factories (Surallah and Polomolok) of Dole Philippines, Inc. This project aims to produce renewable energy by utilizing the pineapple waste and contributes to reducing greenhouse gases emissions as well as lowering electricity cost of the factories.



## Maximum Percentage of Financial Support

Number of previously selected project(s) using a similar technology in each partner country	None (0)	Up to 3 (1-3)	Up to 7 (4-7)	Up to 9 (8-9)	10 or more
Percentage of financial support	Up to 50%	Up to 40%	Up to 30%	Up to 20%	Not Applicable

## Cost-effectiveness

If number of similar projects is...

Less than 5

**JPY4,000/tCO<sub>2</sub>eq or lower**

Between 5 and 9

**JPY3,000/tCO<sub>2</sub>eq or lower**

Solar power projects

**JPY2,500/tCO<sub>2</sub>eq or lower**

Hydropower projects

**JPY500/tCO<sub>2</sub>eq or lower**

Cost-effectiveness of emission reductions of GHG [JPY/tCO<sub>2</sub>eq]

$$= \frac{\text{Amount of financial support [JPY]}}{\text{Total emission reductions of GHG[tCO}_2\text{eq]}}$$

## Eligible and Non-eligible Costs

### Eligible Costs

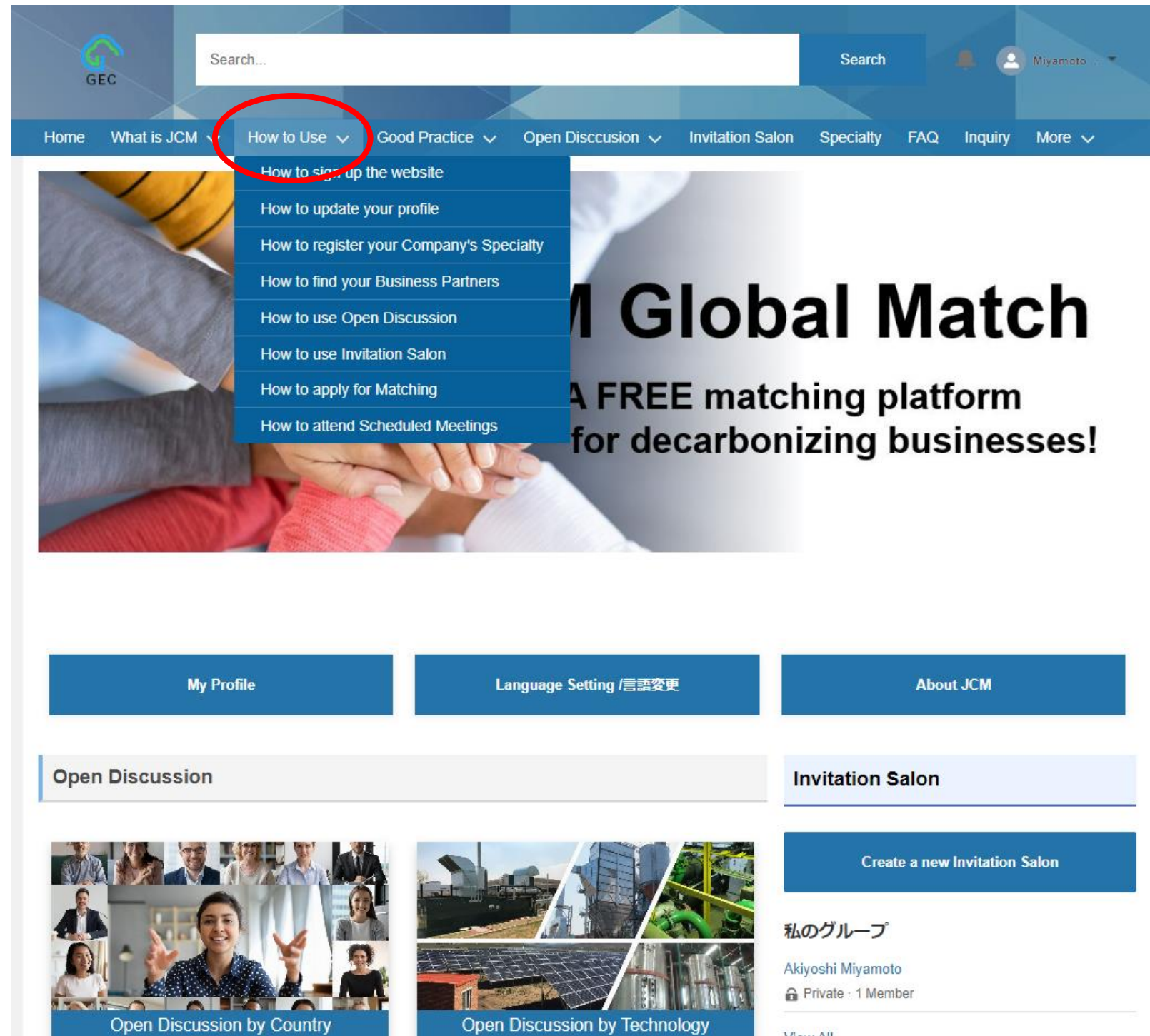
- Facilities/equipment
- Ancillary work
- Surveying and testing
- Administrative work
- Main construction work
- Machinery and appliances

### Non-Eligible Costs

- Removal of existing facilities/equipment
- Equipment and consumable supplies/materials for maintenance of the facilities/equipment
- Civil engineering work and building
- Spare parts
- Cost related to land acquisition

※ These lists are not exhaustive

# JCM Global Match For Further Information



< JCM Global Match QR code >



Link to JCM Global Match site  
<https://gec.force.com/JCMGlobalMatch>

## Consult GEC anytime during the year

Please reach out to GEC to request online and in-person consultations by submitting a consultation form.

Email address: [jcm-info@gec.jp](mailto:jcm-info@gec.jp)

Consultation form: <https://tinyurl.com/4tse8xus>

GEC will answer your questions about JCM financing programme:

- ✓ Definition of eligible projects and advanced technologies
- ✓ Requirement for international consortium
- ✓ Calculation of GHG emissions reduction
- ✓ Legal durable years
- ✓ maximum percentage of financial support
- ✓ Cost effectiveness

### Consultation Form

Global Environment Centre Foundation (GEC)  
 Consultation Form for JCM Project and Demonstration project for application of new decarbonizing technology [FY2024]

\*Please fill out the [white space] as much as possible.  
 \*Reference material - Guidelines for Submitting Proposals (Tentative translation) for JCM Project  
[https://gec.jp/jcm/jp/kobo/r06/mp/\(tentative\)2024\\_Guidelines\\_for\\_Submitting\\_Proposals.pdf](https://gec.jp/jcm/jp/kobo/r06/mp/(tentative)2024_Guidelines_for_Submitting_Proposals.pdf)

Information of Consultation	
Select for which project would you like to apply.	<input type="checkbox"/> JCM Model Project <input type="checkbox"/> Demonstration project for application of new decarbonizing technology <input type="checkbox"/> Undecided
Entry date	Click here to select a date
Method of meeting	<input type="checkbox"/> In-person (Location: _____ ) <input type="checkbox"/> Online
Meeting attendee(s)	<i>*Please list the name(s) and organization(s).</i>
Past consultation date for the same project	<input type="checkbox"/> First time <input type="checkbox"/> ( _____ ) times : Previous Consultation Date : Click here to select a date
ID No. / Meeting date	<i>*For internal use / Select a meeting date for internal use</i>
GEC respondents	<i>*For internal use</i>
Project Information Provided by	
Company name	
Department/division	
Your name	
E-mail address	
Phone No.	<i>*Country code + local number</i>
JCM Global Match registration	<input type="checkbox"/> Registered <input type="checkbox"/> Not registered yet <i>*Please consider registration with JCM Global Match:  <a href="https://jcm-gm.my.site.com/JCMGlobalMatch/s/?language=en_US">https://jcm-gm.my.site.com/JCMGlobalMatch/s/?language=en_US</a></i>
Project Information	
Would you like explanation of JCM and/or New Technology Introduction Project during the meeting?	JCM Model Project: <input type="checkbox"/> Yes <input type="checkbox"/> No Demonstration project for application of new decarbonizing technology: <input type="checkbox"/> Yes <input type="checkbox"/> No
Application target	<input type="checkbox"/> FY2024 <input type="checkbox"/> FY2025 <input type="checkbox"/> TBD If other than above, please specify:
Partner country	

# Thank you!

## Global Environment Centre (GEC) Tokyo Office

4th Floor, Hongo Ozeki Bldg 3-19-4, Hongo, Bunkyo-ku,

Tokyo 113-0033, JAPAN

Phone : +81-3-6801-8860 / FAX : +81-3-6801-8861

E-mail : [jcm-info@gec.jp](mailto:jcm-info@gec.jp)

URL : <http://gec.jp/>

